

H I S T O L O G Y S O L U T I O N S

# HISTOCORE CHROMAX WS

STAINING AND GLASS COVERSIPPING WORKSTATION

BROCHURE

**Automated Accuracy,  
Enhanced Efficiency**



For In Vitro Diagnostic Use

Advancing Cancer Diagnostics  
Improving Lives

**Leica**  
BIO SYSTEMS

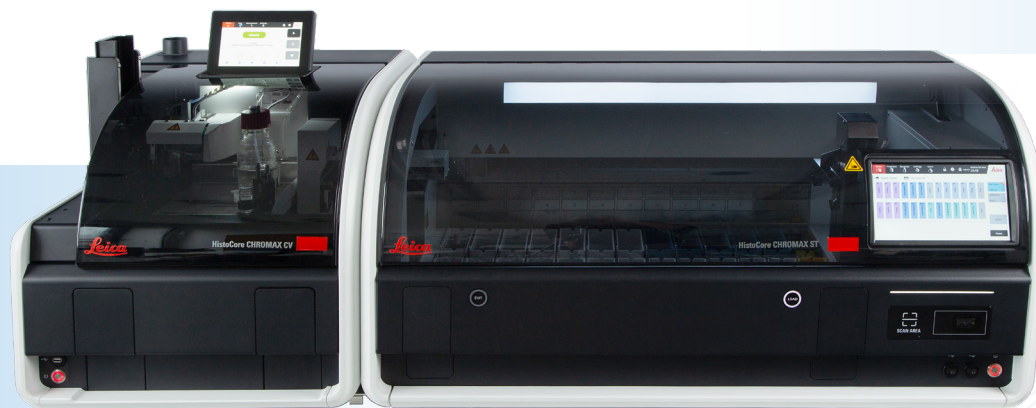


# LEAVE TEDIOUS MANUAL PROCESS STEPS BEHIND

The HistoCore CHROMAX WS allows your team to focus on what truly matters, accurate and timely specimen preparation.

## DECADES OF EXPERTISE IN STAINING SOLUTIONS

Benefit from decades of expertise in delivering high quality - world class staining solutions. The HistoCore CHROMAX WS provides exceptional results for both routine and special stains.



## UPGRADE MADE SIMPLE

Leica ST5010 and CV5030 customers benefit from a smooth switch to the new HistoCore CHROMAX WS. The bath layout remains identical, allowing you to transfer existing protocols to the new instrument. Maintain the same level of flexibility you're accustomed to with the Leica CV5030, when it comes to coverglass and mounting medium options.

## NAVIGATE YOUR INSTRUMENT WITH EASE

Experience a new era of convenience with the HistoCore CHROMAX WS. Modern graphical user interfaces on stainer and coverslipper make it a breeze to access and adjust settings, track staining progress and interact with the instruments.





# ENTER A NEW ERA OF STREAMLINED PRIMARY STAINING AND COVERSIPPING

The HistoCore CHROMAX WS provides increased productivity, optimized reagent consumption, and digital documentation coupled with decades of experience in high-quality staining solutions.

## DATA MANAGEMENT AT YOUR FINGERTIPS

Determine your workload at-a-glance. With the HistoCore CHROMAX ST, your lab gains a reliable companion for workflow tracking and documentation.

Access detailed logs effortlessly, ensuring compliance with standards and facilitating seamless communication across your team.

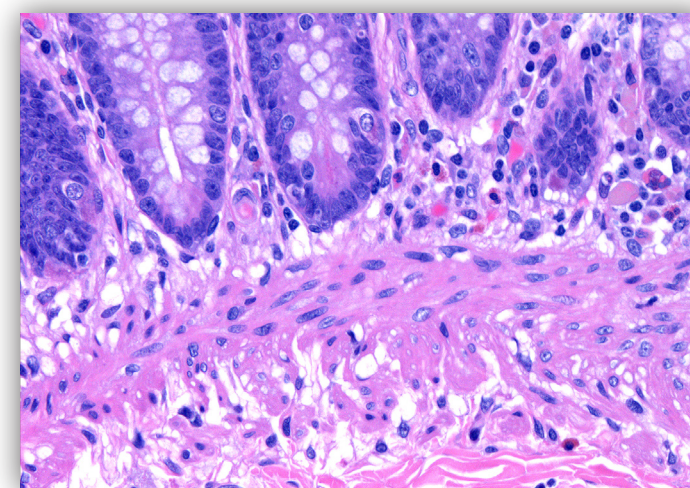


## MAKE EVERY DROP COUNT

The HistoCore CHROMAX ST features advanced reagent consumption optimization by automated slide counting, thus reducing waste and increasing cost efficiency. Embrace optimized reagent usage without compromising on the quality of your stained specimen.

## ONE COVERSIPPER MANY POSSIBILITIES

The versatility of the HistoCore CHROMAX CV is tailored to meet the unique demands of your laboratory. It accommodates a variety of mounting media from common brands, including xylene-free options, supports different coverglass sizes, and seamlessly integrates with slide racks used in market-leading routine stainers.



## GLASS COVERSIPS PROVIDE SUPERB OPTICAL CLARITY FOR DIGITAL APPLICATIONS

Immerse yourself in the superb optical Clarity of glass coverslips provided by the HistoCore CHROMAX CV and set the stage for precision digital scanning and image archiving.



HISTOCORE CHROMAX WS

TECHNICAL SPECIFICATIONS

STAINING AND GLASS COVERSIPPING  
WORKSTATION



HistoCore CHROMAX CV

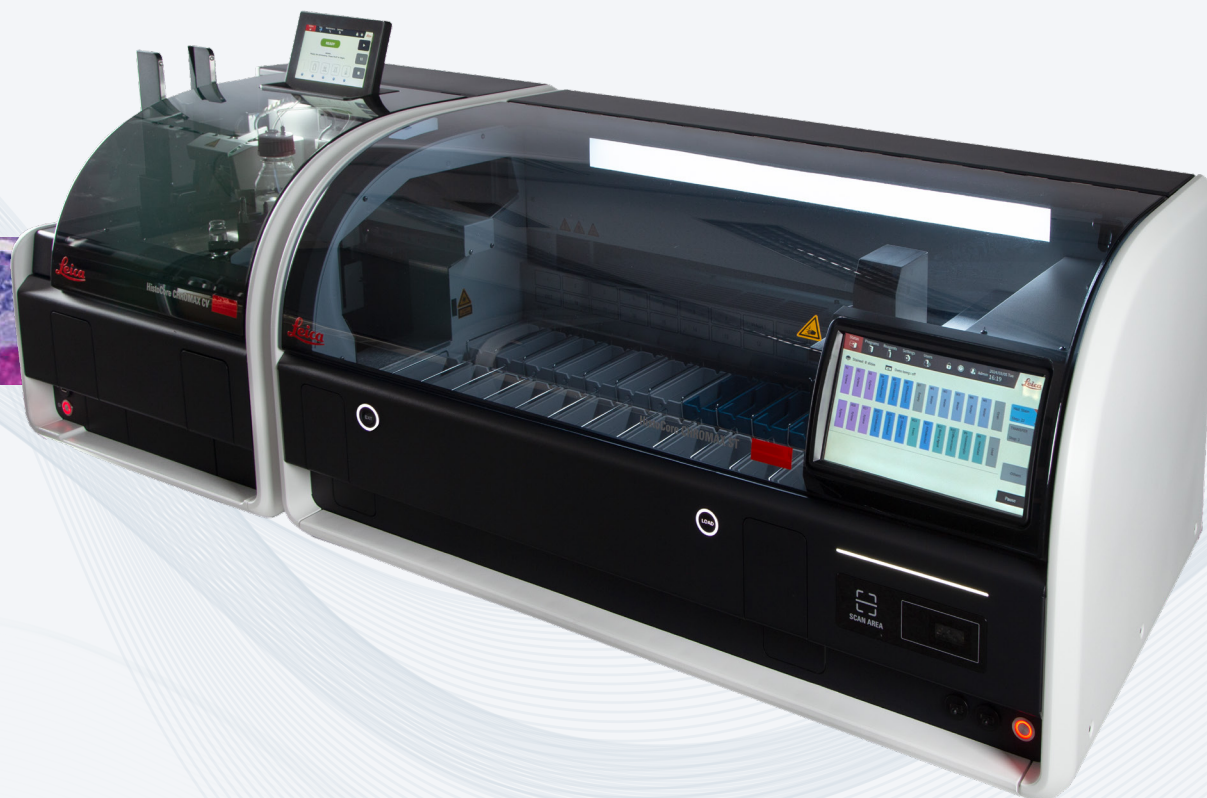
HistoCore CHROMAX ST

Automated Accuracy,  
Enhanced Efficiency

HistoCore CHROMAX Workstation	
Instrument dimensions, hood closed	1714 x 670 x 650 mm
Workstation weight with reagent and accessories	188 kg

HistoCore CHROMAX CV		HistoCore CHROMAX ST	
Instrument dimensions, hood closed	578 x 640 x 650 mm	Instrument dimensions, hood closed	1136 x 670 x 550 mm
Instrument dimensions, hood open	578 x 640 x 900 mm	Instrument dimensions, hood open	1136 x 670 x 870 mm
Weight (with accessories)	72 kg (standalone) 81 kg (workstation configuration)	Weight	88 kg
Loading capacity	30 slides	Weight with reagents	97 kg
Unload capacity	60 slides	Load/unload stations	1/1
Throughput	260 slides per hour	Throughput	240 H&E slides per hour with pre-validated protocol
Mounting medium types	Commercially available types	Capacity of slide rack	30 slides
Mounting medium bottle max fill level	200 ml	Reagent cuvette volume	450 ml
Cover glass sizes	22-24 mm x 40-60 mm; #1.0 or #1.5, following ISO DIN 8255-1	Water flow stations	5
Cover glass magazine capacity	120-160 (depending on thickness)	Reagent stations	18
Specimen slides	All commercially available specimen slides per ISO standard 8037-1	Drying oven	1
Coverslipping parameters	Individually configurable	Nominal supply voltages	100 - 120 VAC/ 220 - 240 VAC +/- 10%
Output rack capacity	max. 60 slides	Reagent Management System	- By slide counting - By days
Nominal supply voltages	100 - 240 V AC +/- 10%	Report (last 3 Years)	- Slide counting (daily/monthly) - Reagent exchange - User run log

## HISTOCORE CHROMAX WORKSTATION



Contact your Leica Biosystems representative today  
to learn about our Core Histology solutions

**[Leicabiosystems.com](https://Leicabiosystems.com)**

LEICA BIOSYSTEMS IS AN INTERNATIONAL COMPANY WITH A STRONG NETWORK OF WORLDWIDE CUSTOMER SERVICES  
For detailed contact information on your nearest sales office or distributor please visit our website: [LeicaBiosystems.com](https://LeicaBiosystems.com)



Copyright © 2024 Leica Biosystems, a division of Leica Microsystems Inc. All Rights Reserved. LEICA and the Leica logo are registered trademarks of Leica Microsystems IR GmbH. HistoCore CHROMAX Workstation, HistoCore CHROMAX ST, and HistoCore CHROMAX CV are trademarks of the Leica Biosystems group of companies in the USA and optionally in other countries. Other logos, product and/or company names might be trademarks of their respective owners.

Leica Biosystems is a global leader in workflow solutions and automation. As the only company to own the workflow from biopsy to diagnosis, we are uniquely positioned to break down the barriers between each of these steps. Our mission of "Advancing Cancer Diagnostics, Improving Lives" is at the heart of our corporate culture. Our easy-to-use and consistently reliable offerings help improve workflow efficiency and diagnostic confidence. The company is represented in over 100 countries. It has manufacturing facilities in 9 countries, sales and service organizations in 19 countries, and an international network of dealers. The company is headquartered in Nussloch, Germany. Visit [LeicaBiosystems.com](https://LeicaBiosystems.com) for more information.