

# HISTOCORE WATER BATH M HISTOCORE SLIDE DRYER

IMPROVE YOUR TISSUE SECTIONING WORKFLOW



## HistoCore Water Bath M:

- Easy water exchanges with our detachable water tray, anodized for greater durability
- Black water tray with built-in LED backlight provides good contrast & visibility for assessing identifying ribbons and assessing sectioning quality
- OLED touch control panel provides intuitive, easy-to-use interface for both water bath and slide dryer
- Each water bath can supply power for up to 2 slide dryers



## HistoCore Slide Dryer:

- Space-saving design ensures small footprint
- Up to 30 slide capacity for improved efficiency
- Black drying rack background provides good ribbon visibility
- 45° angled heated rack, for easy slide placement and pick up
- Dries slides from room temperature up to 75°C
- Connects directly to the HistoCore Water Bath M, eliminating the need for a separate power supply

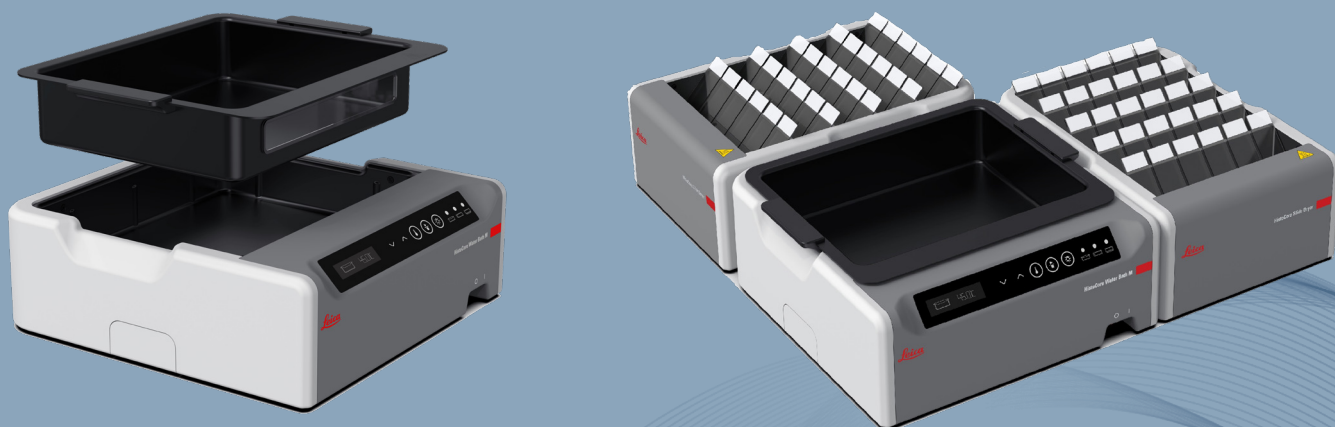


For In Vitro Diagnostic Use

Advancing Cancer Diagnostic  
Improving Lives

# HISTOCORE WATER BATH M HISTOCORE SLIDE DRYER

FLEXIBLE LAYOUT OPTIONS ADAPT TO YOUR WORKFLOW NEEDS



## Technical Specifications

Model Name	HistoCore Water Bath M	HistoCore Slide Dryer
Order Number	140607020C1	140607010C0
Heating temperature	Up to 60°C	Up to 75°C
Dimension (WxDxH, mm / in)	280 x 280 x 105 mm 11.023 x 11.023 x 4.134 in	200 x 280 x 98 mm 7.874 x 11.024 x 3.858 in
Water Tray Demensions (WxDxH, mm / in)	230 x 180 x 53 mm 9.055 x 7.087 x 2.087 in	
Empty Weight	3 kg (w/o packaging)	3 kg (w/o packaging)
Nominal Supply Voltage	100-120 VAC ±10% 220-240 VAC ±10%	100-120 VAC ±10% 220-240 VAC ±10%
Internal LED illumination	Yes	
Heating Speed	20 mins +/- 10%, (220V Voltage), with standard volume water filled, from 15°C to 45°C, at ambient 18°C.	

HistoCore Slide Dryer as accessory

For In Vitro Diagnostic Use

Advancing Cancer Diagnostic  
Improving Lives

