

HISTOCORE WATER BATH

HISTOCORE SLIDE DRYER

IMPROVE YOUR TISSUE SECTIONING WORKFLOW



HistoCore Water Bath:

- Easy water exchanges with our detachable water tray, anodized for greater durability
- Black water tray with built-in LED backlight provides good contrast & visibility for assessing identifying ribbons and assessing sectioning quality
- OLED touch control panel provides intuitive, easy-to use interface for both water bath and slide dryer
- Each water bath can supply power for up to 2 slide dryers



HistoCore Slide Dryer:

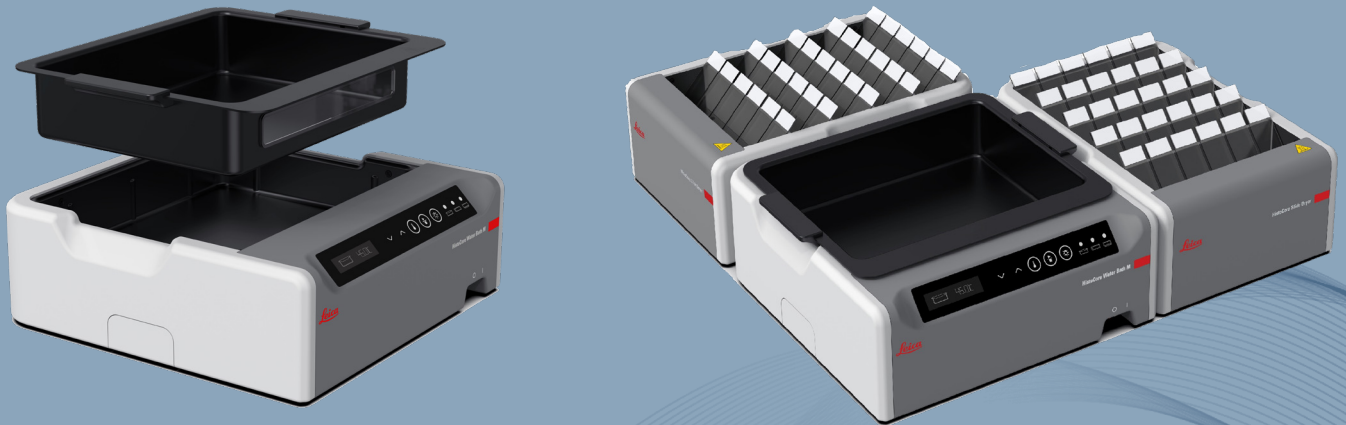
- Space-saving design ensures small footprint
- Up to 30 slide capacity for improved efficiency
- Black drying rack background provides good ribbon visibility
- 45° angled heated rack, for easy slide placement and pick up
- Dries slides from room temperature up to 75°C
- Connects directly to the HistoCore Water Bath, eliminating the need for a separate power supply



HISTOCORE WATER BATH

HISTOCORE SLIDE DRYER

FLEXIBLE LAYOUT OPTIONS ADAPT TO YOUR WORKFLOW NEEDS



Technical Specifications

Model Name	HistoCore Water Bath	HistoCore Slide Dryer
Order Number	140607020C0	140607010C0
Heating temperature	Up to 60°C	Up to 75°C
Dimension (WxDxH, mm / in)	280 x 280 x 105 mm 11.023 x 11.023 x 4.134 in	200 x 280 x 98 mm 7.874 x 11.024 x 3.858 in
Water Tray Dimensions (WxDxH, mm / in)	230 x 180 x 53 mm 9.055 x 7.087 x 2.087 in	
Empty Weight	3 kg (w/o packaging)	3 kg (w/o packaging)
Nominal Supply Voltage	100-120 VAC ±10% 220-240 VAC ±10%	100-120 VAC ±10% 220-240 VAC ±10%
Internal LED illumination	Yes	
Heating Speed	20 mins +/- 10%, (220V Voltage), with standard volume water filled, from 15°C to 45°C, at ambient 18°C.	

HistoCore Slide Dryer as accessory

Advancing Cancer Diagnostic
Improving Lives

