

Advancing Cancer Diagnostics
Improving Lives



BOND-PRIME

IHC & ISH Staining System
High-productivity through Speed, Quality, and
Universal Access



T R A N S C E N D E X P E C T A T I O N S

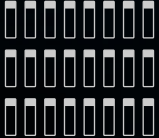
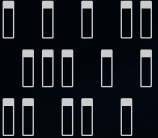

TRANSCEND EXPECTATIONS

The BOND-PRIME staining system featuring Universal Access, delivers high productivity and can seamlessly adapt to your incoming workflow demands effortlessly – whether it be batch, continuous, single slide/STAT cases, or a combination of all the above.

Coupled with the ability to produce high-quality, crisp, clear staining with an average IHC slide TAT of 90 minutes, the BOND-PRIME staining platform lets you transcend expectations for quality, timeliness, and diagnostic productivity.

Load and unload slides on your
schedule, not the instrument's.

BOND-PRIME ADAPTS TO ANY WORKFLOW:

		
Batch	Continuous	Single slide





Active Reagent Control (ARC) Modules ensure consistent, reproducible, high-quality staining.

Excellent Quality Staining



DIAGNOSTIC PRODUCTIVITY

**Universal Access
Powering
Fully Adaptable
Workflow**

**Ave 90 Min
IHC Slide
TAT**

Advanced robotics drastically shorten the time from request to completed case.



Universal Access facilitates a fully adaptable workflow unleashing your full diagnostic productivity.



Load any slide



in any
combination



with any
reagent



at any time

UNIVERSAL ACCESS

EXPERIENCE AUTOMATION, ELEVATED WITH UNIVERSAL ACCESS

Achieve the pinnacle of productivity with the fast and adaptable BOND-PRIME staining platform. Universal Access seamlessly adapts and optimizes your workflow to stain slides as needed.



ANY SLIDE

INDEPENDENT ACTIVE REAGENT CONTROL (ARC) ARRAY

Precisely engineered, individual staining chambers run any staining protocol at any time.



ANY COMBINATION

FULLY ADAPTABLE WORKFLOW

Continually adapts to incoming work. Load single slides, complete cases, full batches or any workflow to keep your slides processing.



ANY REAGENT

70 STAINING REAGENT CAPACITY

Ample reagent space means no delays to add antibodies and/or detection. Be ready to stain slides at all times, especially STAT slides.



ANY TIME

PRELOAD AND UNLOAD DRAWERS

Process up to 72 slides seamlessly for continuous workflows. Load and unload slides on your schedule, not when the instrument demands.

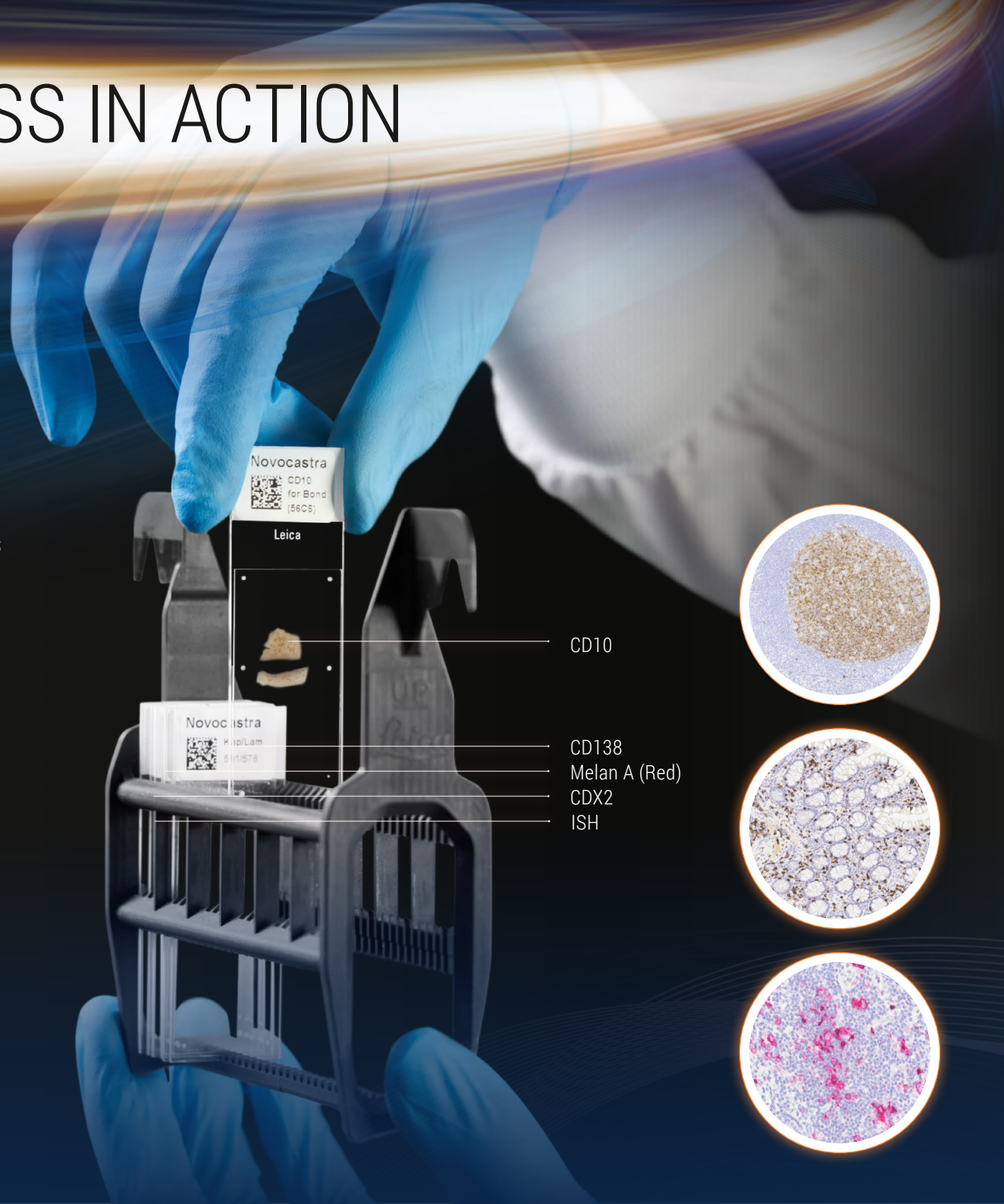
UNIVERSAL ACCESS IN ACTION

ACHIEVE COMPLETE CONTROL OF YOUR DAILY WORKLOAD

Seamlessly adapt to incoming workflows – Batch, Continuous, Single Slide or STAT cases.

The uniquely flexible Preload/Unload Drawer system and the 70-container reagent capacity remove traditional constraints to slide processing and instrument utilization.

Unlike other stainers, there is no need to continually monitor individual slides and reagents on BOND-PRIME.



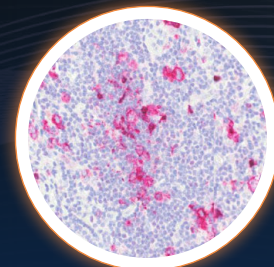
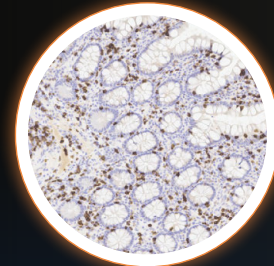
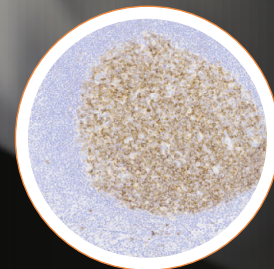
Novocastra
CD10
for Bond
(56C5)

Leica

Novocastra
KisLam
S111578

CD10

CD138
Melan A (Red)
CDX2
ISH



SLIDES IN PROCESSING

Advanced robotics mean rapid slide transit from drawer to processing.

Preload up to 24 slides and walk away, even if at staining capacity.

Unload slides when you are ready, without delaying new slides.

SLIDES IN THE PRELOAD DRAWER

Each time a slide moves it creates a slide vacancy, increasing staining capacity.



Processing Slides



SLIDES IN THE UNLOAD DRAWER

Completed slides are stored in the hydrated Unload Drawer.



Loaded Slides

Completed Slides

FULLY ADAPTABLE WORKFLOW RELEASES YOUR FULL DIAGNOSTIC PRODUCTIVITY

CRISP, CLEAR STAINS

EXCELLENT QUALITY, ACCELERATED

The BOND-PRIME staining platform features progressive automation that works in tandem with our premium reagents to produce crisp, clear stains with the details pathologists look for.

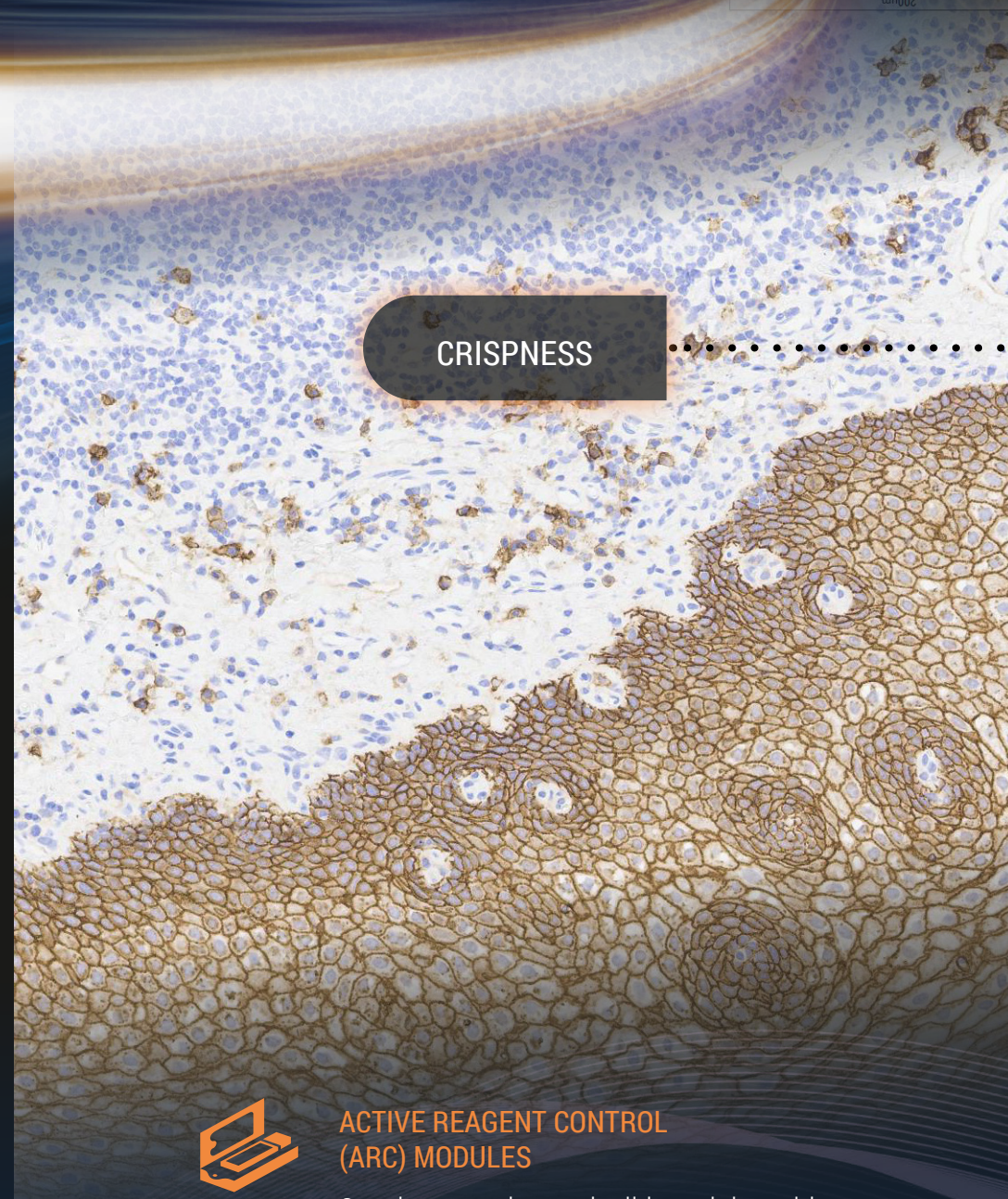


IMAGE GALLERY

Scan here to visit the BOND-PRIME
Staining Image Gallery

Staining performed on BOND-PRIME (left to right):

1. CD138 Plasma Cell Myeloma, skin epithelium
2. HMB45 Red AP Melanoma
3. CD23 Chronic Lymphocytic Leukemia



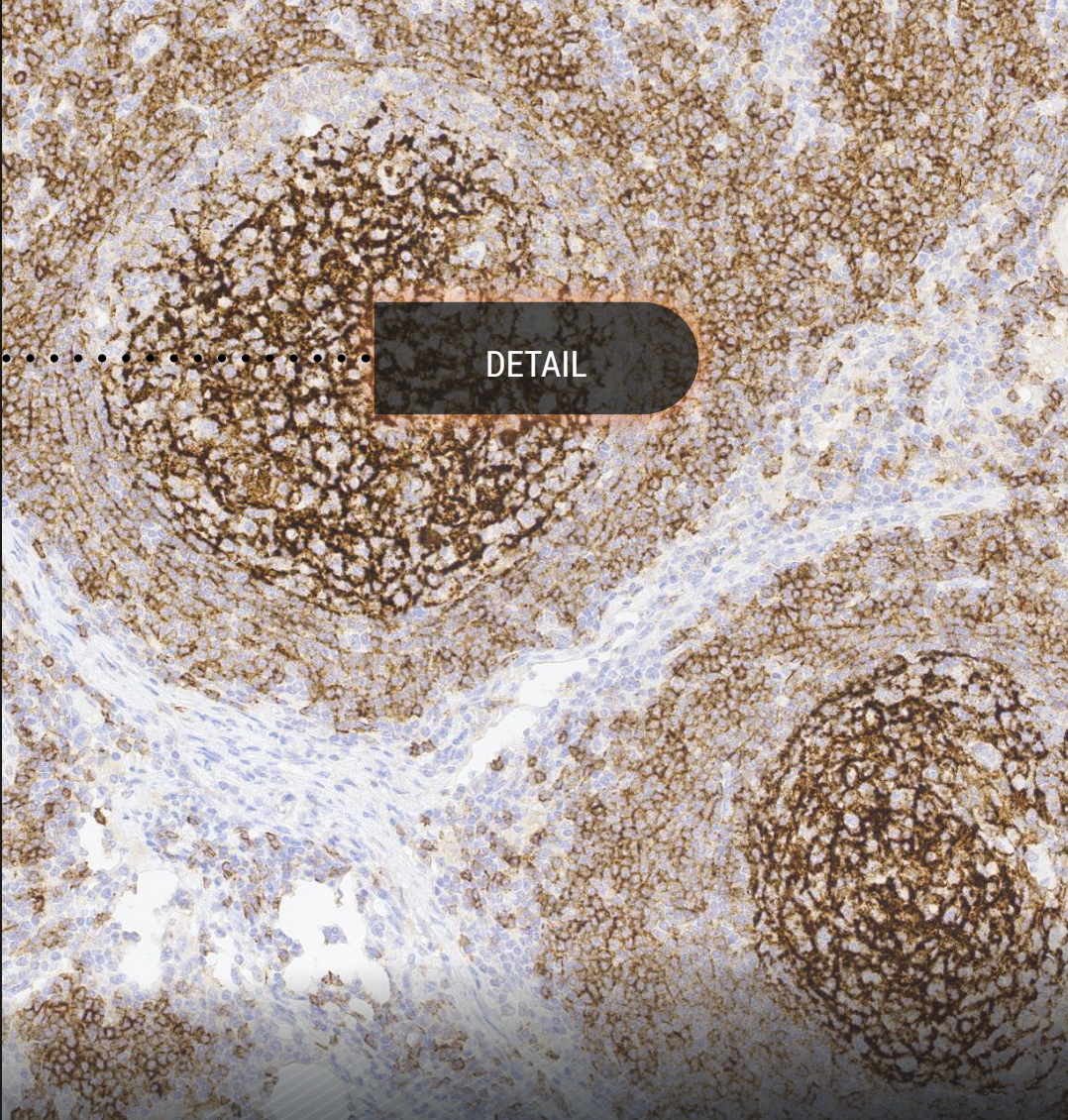
CRISPNESS

ACTIVE REAGENT CONTROL (ARC) MODULES

Consistent and reproducible staining with highly controlled dispense, reagent flow, and precise incubation to each and every slide.



CLARITY



DETAIL



SELF-CLEANING COVERTILE

The novel, semi-permanent ARC Covertile provides a sealed staining environment that protects tissue morphology, uses minimal reagents and provides total tissue care.



PREMIUM STAINING REAGENTS

Distinctive Novocastra advanced staining reagents and detection chemistry featuring Covertile technology achieve next-level staining.

SHORTEN THE TAT FROM RECEIPT TO DIAGNOSIS

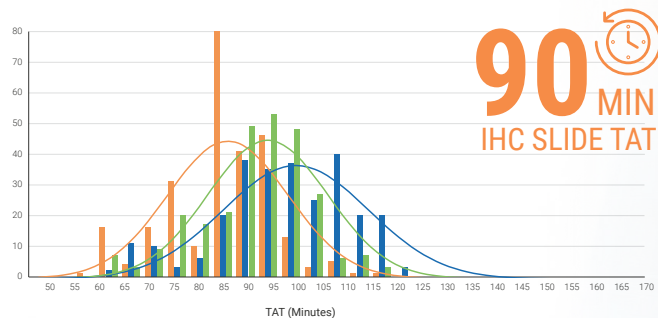
The BOND-PRIME staining platform has unprecedented speed, achieving the breakthrough milestone average IHC slide of 90 min.

IHC testing is often the precursor to additional, more complex testing, so rapid results mean expedited diagnostic information to provide clarity to treatment.

ADVANCED ROBOTICS DELIVER SPEED WITH QUALITY

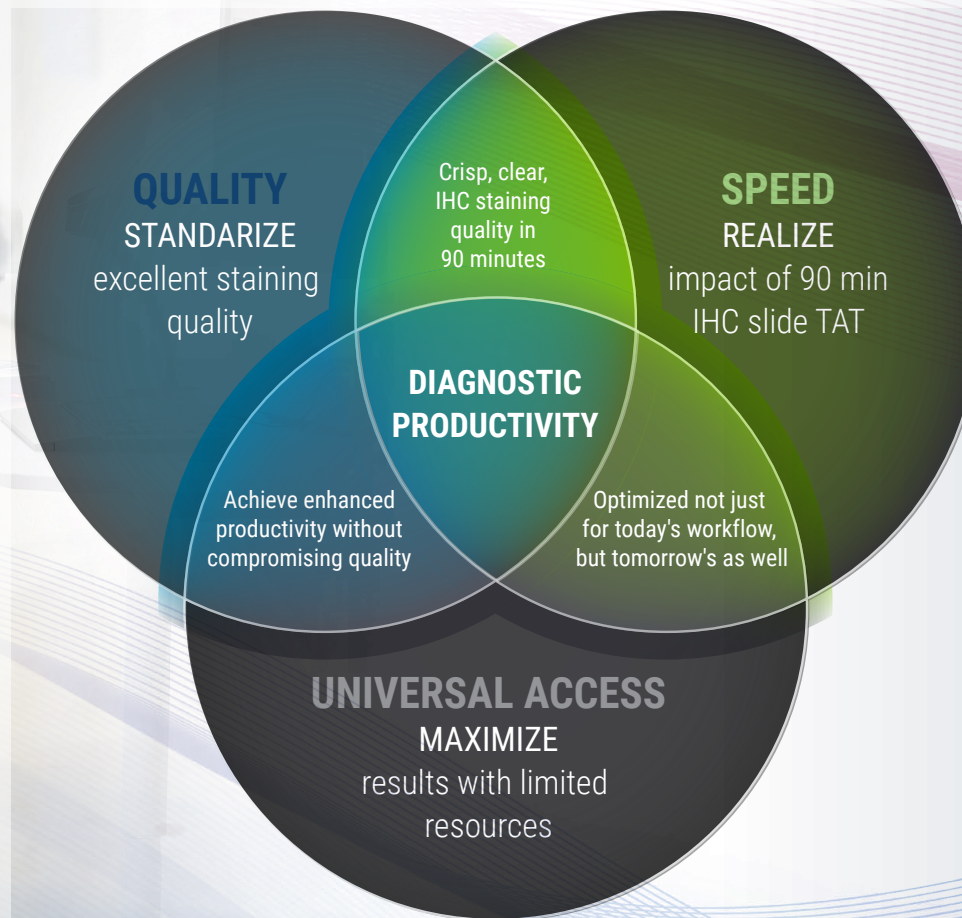
Next-generation robotics, optimized staining protocols with premium reagents and innovative Active Reagent Control (ARC) technology mean you don't have to compromise quality for speed.

With so much relying on this testing, getting to the diagnosis faster is paramount.





BOND-PRIME delivers an adaptable workflow, unprecedented speed, and excellent staining quality for enhanced diagnostic productivity



INVEST IN YOUR SUCCESS

Transcend Expectations for Your Return on Investment

The BOND-PRIME staining system doesn't just offer speed alone.

With resources at a premium, accomplish more with less because competing in today's diagnostic world requires quality diagnosis AND fast TAT.

By delivering cases to pathologists faster, with less operator intervention, BOND-PRIME is the solution that helps improve responsiveness while meeting tightening budgets.

DIAGNOSTIC PRODUCTIVITY

BOND-PRIME

IHC & ISH Staining System High-productivity through Speed, Quality, and Universal Access

BOND-PRIME SYSTEM SPECIFICATIONS

Dimensions	1217 mm (W) x 1400 mm (H) x 829 mm (D) 47.9 in (W) x 55.1 in (H) x 32.6 in (D)
Weight (dry)	384 kg (847 lb)
Slide capacity	72 (24 slides in Preload Drawer, 24 slides in ARC Array, 24 slides in Unload Drawer)
Reagent container capacity	7 mL and 30 mL
Number of reagent containers	70
Bulk reagent container capacity	1.25 L or 4.5 L for DI Water
Hazardous waste container capacity	4.5 L
External bulk waste container capacity	4.5 L
Operating voltage and Mains frequency	90 V to 264 V (for nominal voltage 100 V to 240 V)
Power Consumption	1260 VA
Sound pressure level output (at 1 m)	< 85 dBA maximum < 65 dBA normal operation

The BOND-PRIME has been proudly designed, created and manufactured in Australia.



Learn more at: LeicaBiosystems.com/BOND-PRIME

FOR IN VITRO DIAGNOSTIC USE

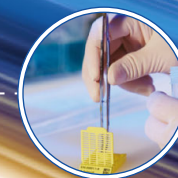
The BOND-PRIME IHC & ISH stainer from Leica Biosystems may not be available for use in your country. Please contact your Leica Biosystems representative for more information.

Copyright © 2022 Leica Biosystems, a division of Leica Microsystems Inc. All Rights Reserved. LEICA and the Leica logo are registered trademarks of Leica Microsystems IR GmbH. CEREBRO, Novocastra and BOND are trademarks of Leica Biosystems and its affiliates.

220100 Rev B 12/2022

THE BOND ECOSYSTEM

HOLISTIC TRACKING



CEREBRO
Specimen Tracking & Workflow Management



BOND-MAX
Compact, Benchtop, Fully Automated IHC and ISH Staining System



BOND-III
High-Throughput, Fully Automated IHC and ISH Staining System



BOND-PRIME
Fully Automated and Adaptable, High-speed IHC and ISH Staining System

WORKFLOW SOLUTIONS



BOND-ADVANCE NETWORK
BOND LIS

CONSUMABLES



READY-TO-USE REAGENTS



PLUG AND PLAY CONSUMABLES



DILUENTS, ANCILLARIES, AND RETRIEVAL SOLUTIONS



NOVOCASTRA ANTIBODIES WITH 14 PATHOLOGY MENUS

Leica
BIO SYSTEMS