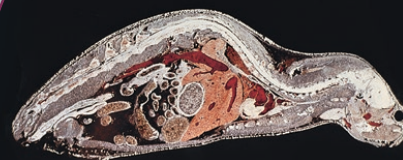


# LEICA CM3600XP

The Cryostat for  
Whole-Body  
Sectioning with  
GLP Documentation



Advancing Cancer Diagnostics  
Improving Lives

**Leica**  
BIO SYSTEMS

# LEICA CM3600XP

## WHOLE-BODY SECTIONING

The Leica CM3600 XP is the cryomacrotome for whole-body sectioning of animals, primarily used in quantitative investigation of the effect of labeled compounds, pharmaceuticals and biologicals in pre-clinical studies.

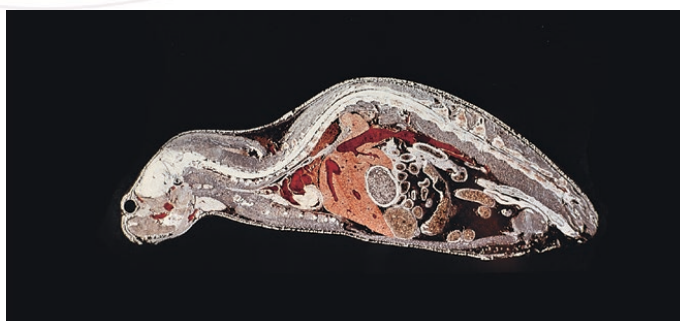
It can also be used for anatomical and morphological analysis of large objects, including cryoplaning for 3D-reconstruction.

## LARGE SPECIMEN STAGE

The heavy-duty microtome supports sectioning of specimens up to 450 x 150 x 200 mm (L,W,H).

## SPECIMEN DEHYDRATION

The CM3600 XP is equipped with a twin compressor design to provide extra capacity for a constant cold air stream when used for dehydration of whole-body sections.

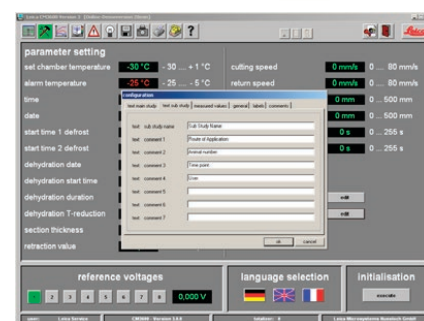
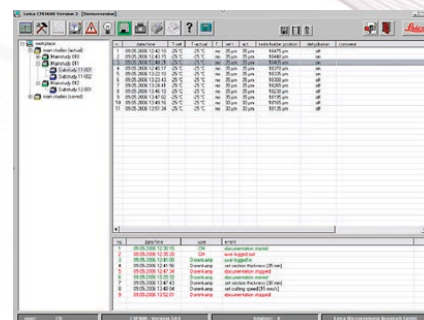


The Leica CM3600 XP is completely controlled through its intuitive Windows interface. Users have access to parameters, such as thickness, speed, and temperature.

## ACCESS RIGHTS AND AUDIT TRAIL

## USER DEFINED DOCUMENTATION

Data records can be customized to the laboratory's need, automatically recorded, and optionally printed on a label for the section.



Sub study:	LE 1 D01
Date:	14.02.2011
Section number:	7
Time point:	30 min
Section thickness:	35 $\mu$ m
Knife position	14275 $\mu$ m
User:	CD



## TECHNICAL SPECIFICATIONS

### MICROTOME

Sectioning thickness setting	1 - 500 µm, in 1 µm increments
Sectioning range	0 - 450 mm
Max. sectioning speed	80 mm/s
Knife retraction after sectioning stroke	50 - 250 µm
Total vertical stroke of knife	100 mm
Total specimen feed	450 mm
Specimen orientation via ball-and-socket joint	Approx. 5° (x/y/z-axis)
Specimen orientation via large specimen stage (450 x 150 mm)	Rotation around longitudinal axis (x-axis)
Maximum specimen size	450 x 150 x 200 mm

### CONTROL UNIT

The Leica CM3600 XP is equipped with a commercially available computer with monitor, keyboard and mouse. For further information, please refer to the manual of the PC

Operating system	Windows®
------------------	----------

### DIMENSIONS AND WEIGHTS

Inner (cryochamber L x H x W)	1650 x 720 x 600 mm
Outer (L x H x W)	2800 x 1090 x 920 mm
Weight (total weight incl. microtome)	660 kg
Weight (microtome only)	190 kg

Contact your Leica Biosystems representative today to learn more about our Core Histology solutions

[LEICABIOSYSTEMS.COM/CONTACT-US](https://www.leicabiosystems.com/contact-us)

Leica Biosystems is an international company with a strong network of worldwide customer services. For detailed contact information on your nearest sales office or distributor please visit our website:

[LeicaBiosystems.com](https://www.leicabiosystems.com)

Leica Biosystems is a global leader in workflow solutions and automation. As the only company to own the workflow from biopsy to diagnosis, we are uniquely positioned to break down the barriers between each of these steps. Our mission of "Advancing Cancer Diagnostics, Improving Lives" is at the heart of our corporate culture. Our easy-to-use and consistently reliable offerings help improve workflow efficiency and diagnostic confidence. The company is represented in over 100 countries. It has manufacturing facilities in 9 countries, sales and service organizations in 19 countries, and an international network of dealers. The company is headquartered in Nussloch, Germany. Visit [LeicaBiosystems.com](https://www.leicabiosystems.com) for more information.