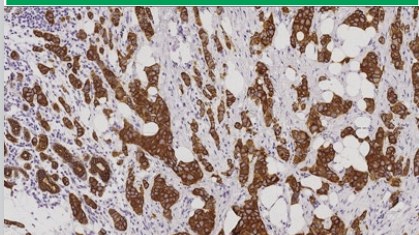


NOVOCASTRA

TUMOR DIFFERENTIATION MARKERS

Cytokeratin 7

TUMOR DIFFERENTIATION

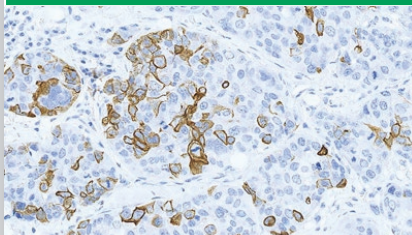


Invasive breast carcinoma: immunohistochemical staining for Cytokeratin 7 - Clone RN7

RN7	NCL-L-CK7-560	1 mL	HD
	PA0942	7 mL	HD
	PA0138	30 mL	HD
OV-TL 12/30	NCL-L-CK7-OVTL	1 mL	-

Cytokeratin 14

TUMOR DIFFERENTIATION

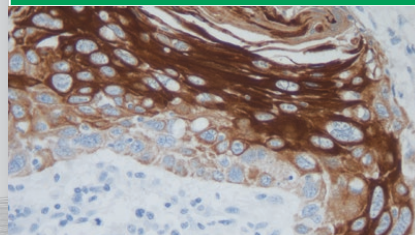


Invasive breast cancer: immunohistochemical staining for the Cytokeratin 14 - Clone LL002

LL002	NCL-L-LL002	1 mL	HD
	PA0074	7 mL	HD

Cytokeratin 17

TUMOR DIFFERENTIATION

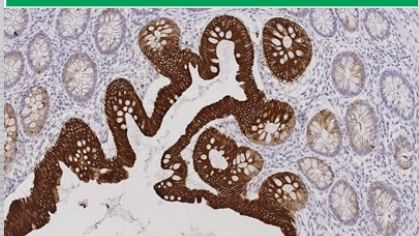


Human squamous cell carcinoma, floor of the mouth: immunohistochemical staining for Cytokeratin 17 - Clone E3

E3	NCL-L-CK17	1 mL	-
	PA0114	7 mL	-

Cytokeratin 20

TUMOR DIFFERENTIATION

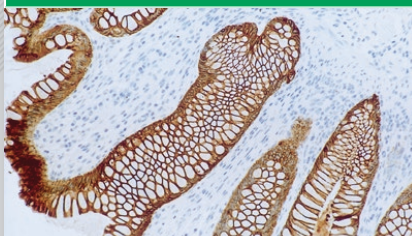


Human colon: immunohistochemical staining for Cytokeratin 20. Note the intense staining of surface mucosa. Cytokeratin 20 - Clone Ks.20.8

Ks20.8	NCL-L-CK20	1 mL	HD
	PA0022	7 mL	HD
	PA0037	30 mL	HD
PW31	NCL-L-CK20-561	1 mL	-

Cytokeratin (8/18)

TUMOR DIFFERENTIATION

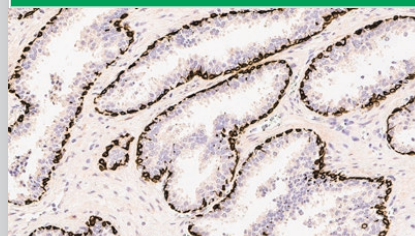


Colon mucosa: immunohistochemical staining for Cytokeratin 8/18 - Clone 5D3

5D3	NCL-L-5D3	1 mL	-
	PA0067	7 mL	-

Cytokeratin, Multi (1/5/10/14)

TUMOR DIFFERENTIATION



Human prostate: immunohistochemical staining of the basal cells of the prostate with anti-cytokeratin (high molecular weight) antibody. Cytokeratin, Multi (1/5/10/14) - Clone 34CE12

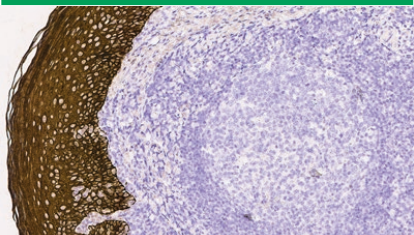
34BetaE12	PA0134	7 mL	-
------------------	--------	------	---

Products in this flyer are subject to regulatory approval. Please consult your Leica Biosystems Sales Representative for availability in your region.

IVD/CE labelled Class I antibodies are recommended for the detection of specific antigens related to the antibody in normal and neoplastic tissues, as an adjunct to conventional histopathology using non-immunologic histochemical stains.

Cytokeratin, Multi (4/5/6/8/10/13/18)

TUMOR DIFFERENTIATION

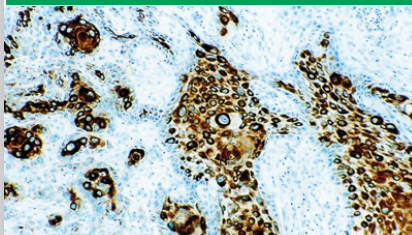


Human tonsil: immunohistochemical staining for cytokeratin, Multi. Note the cytokeratins demonstrated in stratified squamous epithelium. The negative cells in the epithelium are infiltrating lymphocytes. Cytokeratin, Multi (4/5/6/8/10/13/18) - Clone C-11

C-11	NCL-L-C11	1 mL	-
-------------	------------------	------	---

Cytokeratin, Multi (5/6/8/18)

TUMOR DIFFERENTIATION

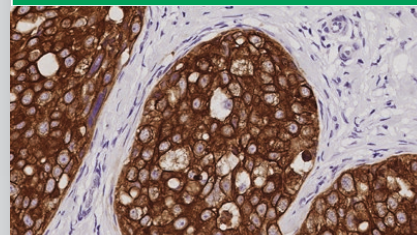


Human squamous cell carcinoma of the floor of the mouth: immunohistochemical staining for cytokeratins. Cytokeratin, Multi (5/6/8/18) - Clone 5D3/LP34

5D3/LP34	NCL-L-CK5/6/8/18	1 mL	-
-----------------	-------------------------	------	---

Cytokeratin, Multi (AE1/AE3)

TUMOR DIFFERENTIATION

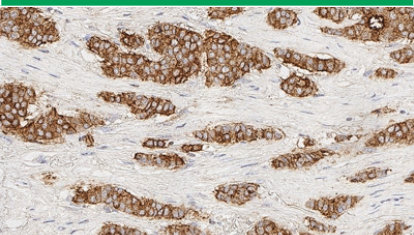


Human invasive ductal carcinoma of the breast: immunohistochemical staining for AE1/AE3. Multi-Cytokeratin - Clone AE1/AE3

AE1/AE3	PA0094	7 mL	-
	NCL-L-AE1/AE3	1 mL	HD
	PA0909	7 mL	HD

Epithelial Membrane Antigen

TUMOR DIFFERENTIATION

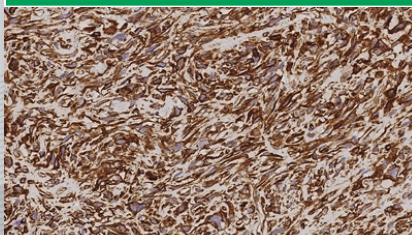


Human breast cancer: immunohistochemical staining for Epithelial Membrane Antigen - Clone GP1.4

GP1.4	NCL-L-EMA	1 mL	-
	PA0035	7 mL	-

Vimentin

TUMOR DIFFERENTIATION



Spindle cell carcinoma: immunohistochemical staining for Vimentin - Clone V9

V9	NCL-L-VIM-V9	1 mL	HD
	PA0640	7 mL	HD
SRL33	NCL-L-VIM-572	1 mL	-

Products in this flyer are subject to regulatory approval. Please consult your Leica Biosystems Sales Representative for availability in your region.

IVD/CE labelled Class I antibodies are recommended for the detection of specific antigens related to the antibody in normal and neoplastic tissues, as an adjunct to conventional histopathology using non-immunologic histochemical stains.

LEICA BIOSYSTEMS IS AN INTERNATIONAL COMPANY WITH A STRONG NETWORK OF WORLDWIDE CUSTOMER SERVICES

For detailed contact information on your nearest sales office or distributor please visit our website: LeicaBiosystems.com

Leica Biosystems is a global leader in workflow solutions and automation. As the only company to own the workflow from biopsy to diagnosis, we are uniquely positioned to break down the barriers between each of these steps. Our mission of "Advancing Cancer Diagnostics, Improving Lives" is at the heart of our corporate culture. Our easy-to-use and consistently reliable offerings help improve workflow efficiency and diagnostic confidence. The company is represented in over 100 countries. It has manufacturing facilities in 9 countries, sales and service organizations in 19 countries, and an international network of dealers. The company is headquartered in Nussloch, Germany. Visit LeicaBiosystems.com for more information.

Copyright © 2021 Leica Biosystems, a division of Leica Microsystems Inc. All Rights Reserved. LEICA and the Leica logo are registered trademarks of Leica Microsystems IR GmbH. BOND and Novocastra are trademarks of the Leica Biosystems group of companies in the USA and optionally in other countries. Other logos, product and/or company names might be trademarks of their respective owners.