

NOVOCASTRA

MUSCLE PATHOLOGY MARKERS

Beta-Dystroglycan

MUSCLE PATHOLOGY

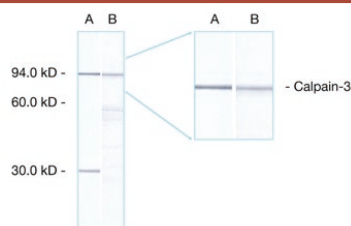


Human skeletal muscle: immunohistochemical staining on a frozen longitudinal section. Staining is localized in the sarcolemma of the fibers. Beta-Dystroglycan - Clone 43DAG1/8D5

43DAG1/8D5
NCL-b-DG
1 mL
-

Calpain Antibodies

MUSCLE PATHOLOGY

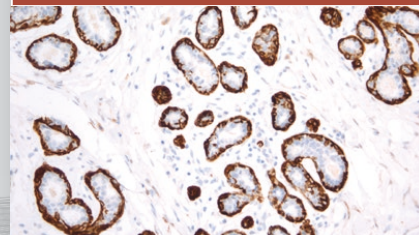


Western Blot: analysis of human skeletal muscle showing detection of calpain 3 proteins. Lane A, calpain 3 bands at 94 and 30 kD detected with CALP-2C4. Lane B, Calpain 3 bands at 94 and approximately 60 kD detected with CALP-12A2. Calpain - Clone Calc3d/2C4 Calpain - Clone Calp3c/12A2

Calp3c/12A2
NCL-CALP-12A2
2.5 mL
-
Calp3d/2C4
NCL-CALP-2C4
2.5 mL
-

Calponin (Basic)

MUSCLE PATHOLOGY

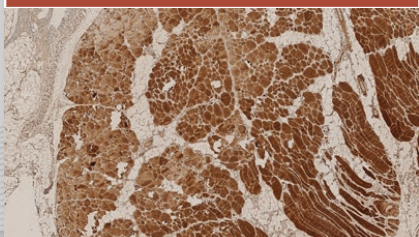


Human prostate: immunohistochemical staining for Calponin (Basic). Note staining of basal cells. Calponin (Basic) - Clone 26A11

26A11
PA0416
7 mL
-

Dysferlin Antibodies

MUSCLE PATHOLOGY

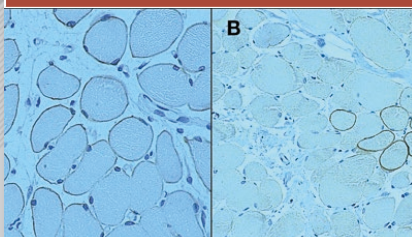


Human skeletal muscle: immunohistochemical staining of HAMLET: HAMLET - Clone Ham1/7B6

Ham1/7B6
NCL-HAMLET
1 mL
-
Ham3/17B2
NCL-HAMLET-2
1 mL
-

Dystrophin Antibodies

MUSCLE PATHOLOGY

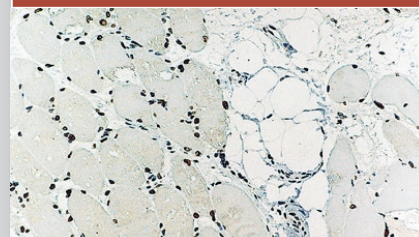


Human skeletal muscle: immunohistochemical staining for Dystrophin. Note membrane staining of normal muscle fibers (A) and reduced and variable staining of revertant muscle fibers (B). Dystrophin - Clone 13H6

13H6
NCL-DYSA
1 mL
-
34C5
NCL-DYSB
1 mL
-
Dy4/6D3
NCL-DYS1
1 mL
-
DY8/6C5
NCL-DYS2
1 mL
-
DY10/12B2
NCL-DYS3
1 mL
-

Emerin

MUSCLE PATHOLOGY

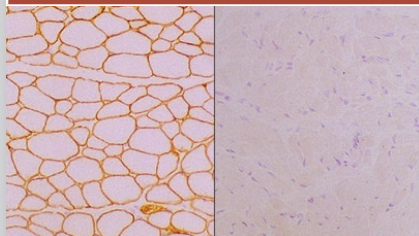


Human skeletal muscle: immunohistochemical staining for Emerin. Note perinuclear staining of all cell nuclei. Emerin - Clone 4G5

4G5
NCL-EMERIN
1 mL
-

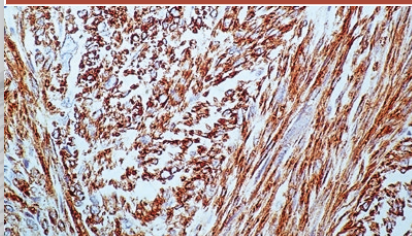
Products in this flyer are subject to regulatory approval. Please consult your Leica Biosystems Sales Representative for availability in your region.

IVD/CE labelled Class I antibodies are recommended for the detection of specific antigens related to the antibody in normal and neoplastic tissues, as an adjunct to conventional histopathology using non-immunologic histochemical stains.

Merosin Laminin Alpha 2 Chain**MUSCLE PATHOLOGY**

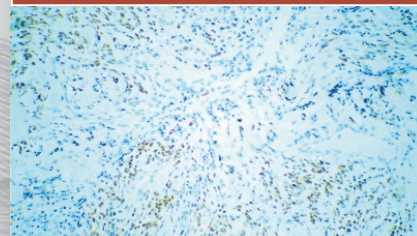
Human skeletal muscle: immunohistochemical staining for Merosin. Note membrane staining of normal muscle fibers (A) and absence of staining of muscle fibers (B). Frozen sections. Photographs supplied courtesy of Dr Louise V B Anderson. Merosin Laminin Alpha 2 Chain - Clone Mer3/22B2

Mer3/22B2	NCL-MEROSIN	1 mL	-
------------------	--------------------	-------------	----------

Muscle Pathology Specific Actin**MUSCLE PATHOLOGY**

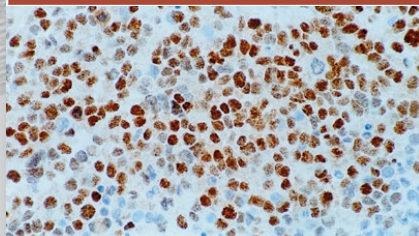
Human leiomyosarcoma: immunohistochemical staining for Muscle Specific Actin. Muscle Specific Actin - Clone HHF35

HHF35	NCL-L-MSA	1 mL	-
	PA0258	7 mL	-
SC28	NCL-L-MSA-594	1 mL	-

MyoD1 (Rhabdomyosarcoma)**MUSCLE PATHOLOGY**

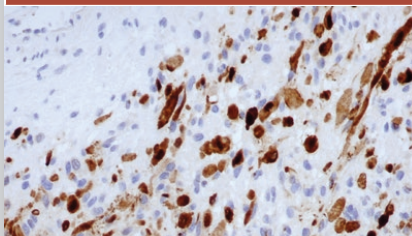
Human rhabdomyosarcoma: immunohistochemical staining for MyoD1 protein - Clone 5.8A

5.8A	NCL-L-MyoD1	1 mL	-
-------------	--------------------	-------------	----------

Myogenin (Myf-4)**MUSCLE PATHOLOGY**

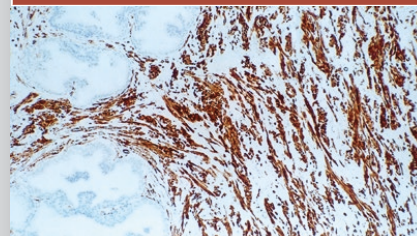
Human rhabdomyosarcoma: immunohistochemical staining for Myogenin (Myf-4) protein - Clone L026

L026	NCL-L-Myf-4	1 mL	-
	PA0226	7 mL	-

Myoglobin**MUSCLE PATHOLOGY**

Human rhabdomyosarcoma: immunohistochemical staining for Myoglobin - Clone MY018

MY018	PA0727	7 mL	-
--------------	---------------	-------------	----------

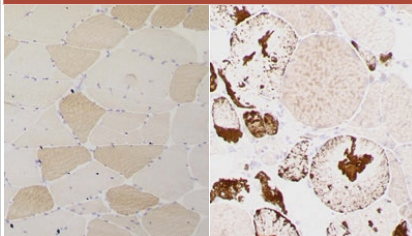
Myosin Heavy Chain Antibodies**MUSCLE PATHOLOGY**

Human prostate: immunohistochemical staining for myosin heavy chain. Note intense staining of muscle fibers. Myosin Heavy Chain (smooth muscle) - Clone S131

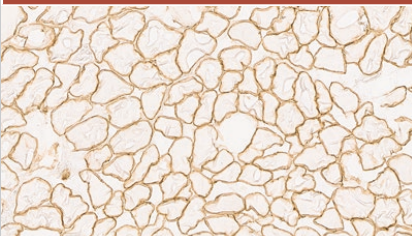
S131	PA0493	7 mL	-
RNMy2/9D2	NCL-MHCd	1 mL	-
WB-MHCf	NCL-MHCf	1 mL	-
WB-MHCN	NCL-MHCn	1 mL	-
WB-MHCS	NCL-MHCs	1 mL	-

Products in this flyer are subject to regulatory approval. Please consult your Leica Biosystems Sales Representative for availability in your region.

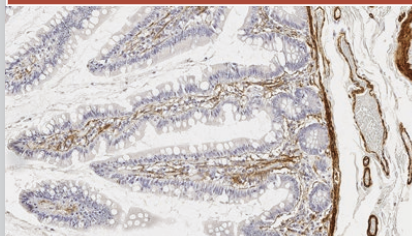
IVD/CE labelled Class I antibodies are recommended for the detection of specific antigens related to the antibody in normal and neoplastic tissues, as an adjunct to conventional histopathology using non-immunologic histochemical stains.

Myotilin**MUSCLE PATHOLOGY**

Human skeletal muscle: immunohistochemical staining for Myotilin. Note sarcoplasmic staining of normal muscle fibers (A) and presence of protein aggregates (B). Myotilin - Clone RS034

RS034**NCL-MYOTILIN****1 mL****-****Sarcoglycan Antibodies****MUSCLE PATHOLOGY**

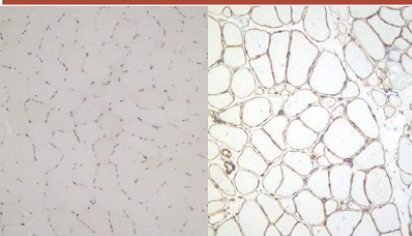
Transverse section of skeletal muscle fibers. immunohistochemical staining for Alpha Sarcoglycan. Note the demonstration of localized Alpha Sarcoglycan to the sarcolemma of the muscle fibers. Alpha Sarcoglycan - Clone Ad1/20A6

Ad1/20A6**NCL-L-a-SARC****1 mL****-****βSarc1/5B1****NCL-L-b-SARC****1 mL****-****δSarc3/12C1****NCL-d-SARC****1 mL****-****35DAG/21B5****NCL-g-SARC****1 mL****-****SMA (Alpha Smooth Muscle Pathology Actin)****MUSCLE PATHOLOGY**

Human small bowel: immunohistochemical staining for Alpha Smooth Muscle Actin. Note cytoplasmic staining of the muscularis mucosa, vascular walls and smooth muscle fibers in the lamina propria. SMA: clone-α-sm-1

asm-1**NCL-L-SMA****1 mL****HD****PA0943****7 mL****HD****Spectrin****MUSCLE PATHOLOGY**

Human striated muscle: immunohistochemical staining for Spectrin. Note membrane staining of muscle fibers. Spectrin - Clone RBC2/3D5

RBC2/3D5**NCL-SPEC1****1 mL****-****Utrophin****MUSCLE PATHOLOGY**

Human skeletal muscle: immunohistochemical staining for Utrophin. In control muscle the antibody labels blood vessels and neuromuscular junctions (A). Utrophin is expressed at the sarcolemma in individuals with mutations in the DMD gene (B). Utrophin - Clone DRP3/20C5

DRP3/20C5**NCL-DRP2****1 mL****-**

Products in this flyer are subject to regulatory approval. Please consult your Leica Biosystems Sales Representative for availability in your region.

IVD/CE labelled Class I antibodies are recommended for the detection of specific antigens related to the antibody in normal and neoplastic tissues, as an adjunct to conventional histopathology using non-immunologic histochemical stains.

NAME	CLONE	PRODUCT CODE	HD	CONCENTRATES (MANUAL)				RTU (AUTOMATED)			PATHOLOGY MENU
				0.5 mL	1 mL	2 mL	2.5 mL	7 mL	13.5 mL	30 mL	
Beta-Dystroglycan	43DAG1/8D5	NCL-b-DG	-	-	1 mL	-	-	-	-	-	MUSCLE PATHOLOGY
Calpain Antibodies	Calp3c/12A2	NCL-CALP-12A2	-	-	-	-	2.5 mL	-	-	-	MUSCLE PATHOLOGY
	Calp3d/2C4	NCL-CALP-2C4	-	-	-	-	2.5 mL	-	-	-	MUSCLE PATHOLOGY
Calponin (Basic)	26A11	PA0416	-	-	-	-	-	7 mL	-	-	MUSCLE PATHOLOGY
Dysferlin Antibodies	Ham1/7B6	NCL-HAMLET	-	-	1 mL	-	-	-	-	-	MUSCLE PATHOLOGY
	Ham3/17B2	NCL-HAMLET-2	-	-	1 mL	-	-	-	-	-	MUSCLE PATHOLOGY
Dystrophin Antibodies	13H6	NCL-DYSA	-	-	1 mL	-	-	-	-	-	MUSCLE PATHOLOGY
	34C5	NCL-DYSB	-	-	1 mL	-	-	-	-	-	
	Dy4/6D3	NCL-DYS1	-	-	1 mL	-	-	-	-	-	
	DY8/6C5	NCL-DYS2	-	-	1 mL	-	-	-	-	-	
	DY10/12B2	NCL-DYS3	-	-	1 mL	-	-	-	-	-	
Emerin	4G5	NCL-EMERIN	-	-	1 mL	-	-	-	-	-	MUSCLE PATHOLOGY
Merosin Laminin Alpha 2 Chain	Mer3/22B2	NCL-MEROSIN	-	-	1 mL	-	-	-	-	-	MUSCLE PATHOLOGY
Muscle Pathology Specific Actin	HHF35	NCL-L-MSA	-	-	1 mL	-	-	-	-	-	MUSCLE PATHOLOGY
	PA0258		-	-	-	-	-	7 mL	-	-	
	SC28	NCL-L-MSA-594	-	-	1 mL	-	-	-	-	-	
MyoD1 (Rhabdomyosarcoma)	5.8A	NCL-L-MyoD1	-	-	1 mL	-	-	-	-	-	MUSCLE PATHOLOGY
Myogenin (Myf-4)	L026	NCL-L-Myf-4	-	-	1 mL	-	-	-	-	-	MUSCLE PATHOLOGY
	PA0226		-	-	-	-	-	7 mL	-	-	
Myoglobin	MY018	PA0727	-	-	-	-	-	7 mL	-	-	MUSCLE PATHOLOGY
Myosin Heavy Chain Antibodies	S131	PA0493	-	-	-	-	-	7 mL	-	-	MUSCLE PATHOLOGY
	RNMy2/9D2	NCL-MHCd	-	-	1 mL	-	-	-	-	-	
	WB-MHCf	NCL-MHCf	-	-	1 mL	-	-	-	-	-	
	WB-MHCN	NCL-MHCn	-	-	1 mL	-	-	-	-	-	
	WB-MHCS	NCL-MHCs	-	-	1 mL	-	-	-	-	-	
Myotilin	RS034	NCL-MYOTILIN	-	-	1 mL	-	-	-	-	-	MUSCLE PATHOLOGY
Sarcoglycan Antibodies	Ad1/20A6	NCL-L-a-SARC	-	-	1 mL	-	-	-	-	-	MUSCLE PATHOLOGY
	bSarc1/5B1	NCL-L-b-SARC	-	-	1 mL	-	-	-	-	-	
	dSarc3/12C1	NCL-d-SARC	-	-	1 mL	-	-	-	-	-	
	35DAG/21B5	NCL-g-SARC	-	-	1 mL	-	-	-	-	-	
SMA (Alpha Smooth Muscle Pathology Actin)	alpha sm-1	NCL-L-SMA	HD	-	1 mL	-	-	-	-	-	MUSCLE PATHOLOGY
	PA0943		HD	-	-	-	-	7 mL	-	-	
Spectrin	RBC2/3D5	NCL-SPEC1	-	-	1 mL	-	-	-	-	-	MUSCLE PATHOLOGY
Utrophin	DRP3/20C5	NCL-DRP2	-	-	1 mL	-	-	-	-	-	MUSCLE PATHOLOGY

Products in this flyer are subject to regulatory approval. Please consult your Leica Biosystems Sales Representative for availability in your region.

IVD/CE labelled Class I antibodies are recommended for the detection of specific antigens related to the antibody in normal and neoplastic tissues, as an adjunct to conventional histopathology using non-immunologic histochemical stains.

LEICA BIOSYSTEMS IS AN INTERNATIONAL COMPANY WITH A STRONG NETWORK OF WORLDWIDE CUSTOMER SERVICES

For detailed contact information on your nearest sales office or distributor please visit our website: [LeicaBiosystems.com](https://www.LeicaBiosystems.com)

Leica Biosystems is a global leader in workflow solutions and automation. As the only company to own the workflow from biopsy to diagnosis, we are uniquely positioned to break down the barriers between each of these steps. Our mission of "Advancing Cancer Diagnostics, Improving Lives" is at the heart of our corporate culture. Our easy-to-use and consistently reliable offerings help improve workflow efficiency and diagnostic confidence. The company is represented in over 100 countries. It has manufacturing facilities in 9 countries, sales and service organizations in 19 countries, and an international network of dealers. The company is headquartered in Nussloch, Germany. Visit [LeicaBiosystems.com](https://www.LeicaBiosystems.com) for more information.

Copyright © 2021 Leica Biosystems, a division of Leica Microsystems Inc. All Rights Reserved. LEICA and the Leica logo are registered trademarks of Leica Microsystems IR GmbH. BOND and Novocastra are trademarks of the Leica Biosystems group of companies in the USA and optionally in other countries. Other logos, product and/or company names might be trademarks of their respective owners.