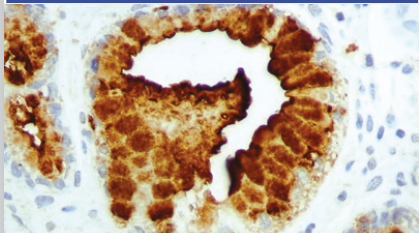


NOVOCASTRA

GASTROINTESTINAL PATHOLOGY MARKERS

CA19-9 (Sialyl Lewis a)

GASTROINTESTINAL PATHOLOGY

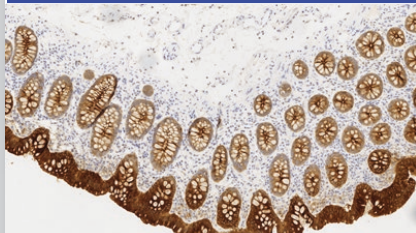


Colonic adenocarcinoma: immunohistochemical staining for Sialyl Lewis a antigen. CA19-9 - Clone C241:5:1:4

C241:5:1:4	NCL-L-CA19-9	1 mL	-
	PA0424	7 mL	-

Carcinoembryonic Antigen (CD66e)

GASTROINTESTINAL PATHOLOGY

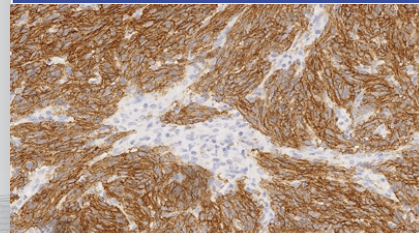


Human bowel: immunohistochemical staining for CD66e. Note cytoplasmic staining of epithelial cells. CD66e - Clone 12-140-10

COL-1	NCL-L-CEA-609	1 mL	HD
	PA0848	7 mL	HD
12-140-10	NCL-L-CEA-2	1 mL	-

CD117

GASTROINTESTINAL PATHOLOGY

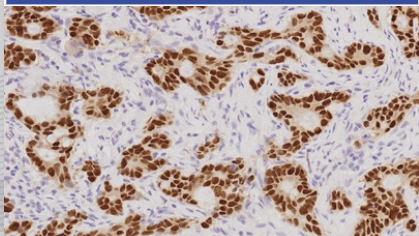


Human colon, gastrointestinal stromal tumor: immunohistochemical staining for CD117 - Clone EP10

EP10	NCL-L-CD117-032	1 mL	HD
	PA0007	7 mL	HD
T595	NCL-L-CD117	1 mL	-

CDX2

GASTROINTESTINAL PATHOLOGY

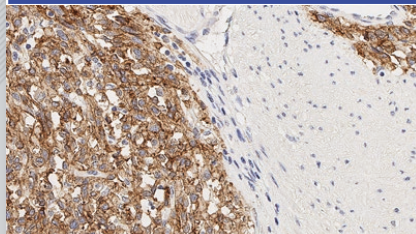


Human colonic adenocarcinoma: immunohistochemical staining for CDX2 - Clone EP25

EP25	PA0375	7 mL	HD
------	--------	------	----

DOG-1

GASTROINTESTINAL PATHOLOGY

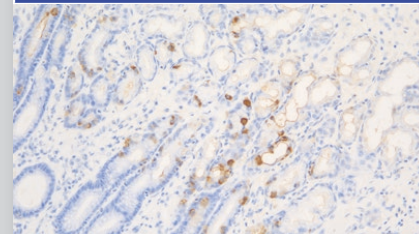


Human colon, gastrointestinal stromal tumor: immunohistochemical staining for DOG-1 - Clone K9

K9	NCL-L-DOG-1	1 mL	HD
	PA0219	7 mL	HD

Gastrin

GASTROINTESTINAL PATHOLOGY

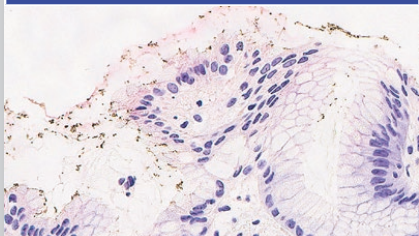


Normal human stomach: immunohistochemical staining for Gastrin. Note: intense cytoplasmic staining of neuroendocrine cells. Gastrin - Polyclonal

Polyclonal	PA0681	7 mL	-
------------	--------	------	---

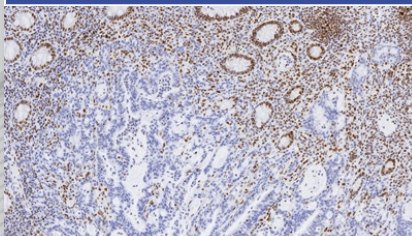
Products in this flyer are subject to regulatory approval. Please consult your Leica Biosystems Sales Representative for availability in your region.

IVD/CE labelled Class I antibodies are recommended for the detection of specific antigens related to the antibody in normal and neoplastic tissues, as an adjunct to conventional histopathology using non-immunologic histochemical stains.

Helicobacter pylori**GASTROINTESTINAL PATHOLOGY**

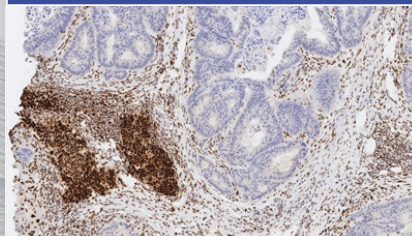
Immunohistochemical staining for *Helicobacter pylori* - Clone ULC3R

Polyclonal	IHC5994-A	7 mL	-
ULC3R	NCL-L-HPYLORI	1 mL	HD

Mismatch Repair Protein (MLH1)**GASTROINTESTINAL PATHOLOGY**

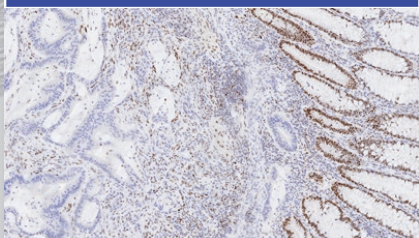
Human squamous cell carcinoma: immunohistochemical staining for Mismatch Repair Protein (MLH1) - Clone ES05

ES05	NCL-L-MLH1	1 mL	HD
	PA0988	7 mL	HD

Mismatch Repair Protein (MSH2)**GASTROINTESTINAL PATHOLOGY**

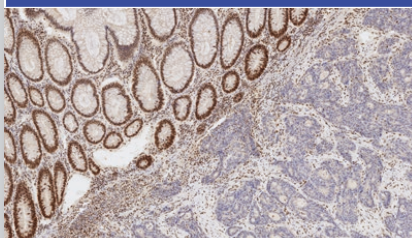
Human tonsil: immunohistochemical staining for MSH2. Note the nuclear staining for Mismatch Repair Protein (MSH2) - Clone 25D12

79H11	NCL-L-MSH2-612	1 mL	HD
	PA0989	7 mL	HD
25D12	NCL-L-MSH2	1 mL	HD

Mismatch Repair Protein (MSH6)**GASTROINTESTINAL PATHOLOGY**

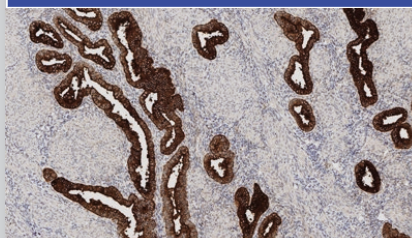
Human bowel: immunohistochemical staining for Mismatch Repair Protein (MSH6) - Clone PU29

EP49	PA0990	7 mL	HD
PU29	NCL-L-MSH6	1 mL	HD

Mismatch Repair Protein (PMS2)**GASTROINTESTINAL PATHOLOGY**

Human colonic carcinoma: immunohistochemical staining for Mismatch Repair Protein (PMS2) - Clone M0R4G

EP51	PA0991	7 mL	HD
M0R4G	NCL-L-PMS2	1 mL	HD

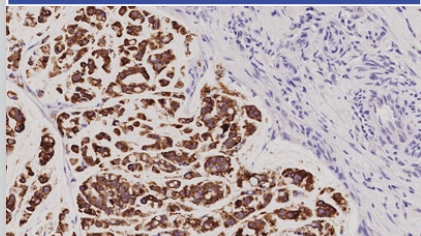
Muc-1 Glycoprotein**GASTROINTESTINAL PATHOLOGY**

Human endometrium: immunohistochemical staining for Muc-1 Glycoprotein - Clone Ma695

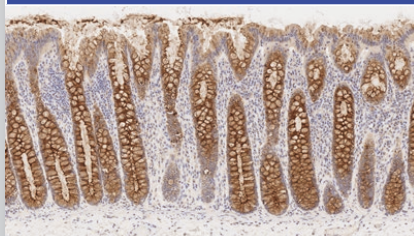
Ma695	PA0051	7 mL	-
--------------	--------	------	---

Products in this flyer are subject to regulatory approval. Please consult your Leica Biosystems Sales Representative for availability in your region.

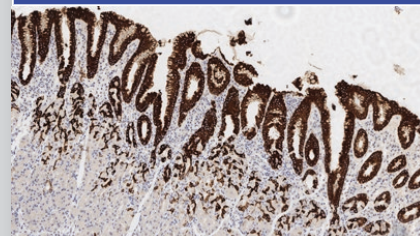
IVD/CE labelled Class I antibodies are recommended for the detection of specific antigens related to the antibody in normal and neoplastic tissues, as an adjunct to conventional histopathology using non-immunologic histochemical stains.

Muc-2 Glycoprotein**GASTROINTESTINAL PATHOLOGY**

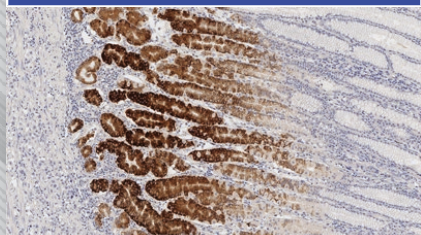
Human colon: immunohistochemical staining for Muc-2 Glycoprotein - Clone Ccp58

Ccp58**PA0155****7 mL****-****Muc-4 Glycoprotein****GASTROINTESTINAL PATHOLOGY**

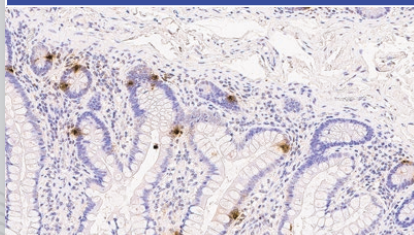
Human colon: immunohistochemical staining for MUC-4. Muc-4 Glycoprotein - Clone EPR9308

EPR9308**PA0444****7 mL****-****Muc-5AC Glycoprotein****GASTROINTESTINAL PATHOLOGY**

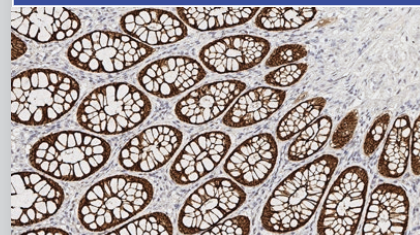
Human stomach: immunohistochemical staining for Muc- 5AC. Note luminal and cytoplasmic staining of surface gastric epithelial cells. Muc-5AC Glycoprotein - Clone CLH2

CLH2**PA0052****7 mL****-****Muc-6 Glycoprotein****GASTROINTESTINAL PATHOLOGY**

Human stomach: immunohistochemical staining for Muc-6. Note cytoplasmic staining of deeper gastric epithelial cells. Muc-6 Glycoprotein - Clone CLH5

CLH5**PA0053****7 mL****-****Serotonin****GASTROINTESTINAL PATHOLOGY**

Human bowel: immunohistochemical staining for Serotonin-containing mucosal cells. Serotonin - Polyclonal

Polyclonal**PA0736****7 mL****-****Villin****GASTROINTESTINAL PATHOLOGY**

Human large bowel: immunohistochemical staining for Villin. Note cytoplasmic staining of the epithelial cells. Villin - Clone CWWB1

CWWB1**NCL-L-VILLIN****1 mL****-**

Products in this flyer are subject to regulatory approval. Please consult your Leica Biosystems Sales Representative for availability in your region.

IVD/CE labelled Class I antibodies are recommended for the detection of specific antigens related to the antibody in normal and neoplastic tissues, as an adjunct to conventional histopathology using non-immunologic histochemical stains.

NAME	CLONE	PRODUCT CODE	HD	CONCENTRATES (MANUAL)				RTU (AUTOMATED)			PATHOLOGY MENU
				0.5 mL	1 mL	2 mL	2.5 mL	7 mL	13.5 mL	30 mL	
CA19-9 (Sialyl Lewis a)	C241:5:1:4	NCL-L-CA19-9	-	-	1 mL	-	-	-	-	-	GASTROINTESTINAL PATHOLOGY
		PA0424	-	-	-	-	-	7 mL	-	-	
Carcinoembryonic Antigen (CD66e)	COL-1	NCL-L-CEA-609	HD	-	1 mL	-	-	-	-	-	GASTROINTESTINAL PATHOLOGY
	PA0848	HD	-	-	-	-	-	7 mL	-	-	
	12-140-10	NCL-L-CEA-2	-	-	1 mL	-	-	-	-	-	
CD117	EP10	NCL-L-CD117-032	HD	-	1 mL	-	-	-	-	-	GASTROINTESTINAL PATHOLOGY
	PA0007		HD	-	-	-	-	7 mL	-	-	
	T595	NCL-L-CD117	-	-	1 mL	-	-	-	-	-	
CDX2	EP25	PA0375	HD	-	-	-	-	7 mL	-	-	GASTROINTESTINAL PATHOLOGY
DOG-1	K9	NCL-L-DOG-1	HD	-	1 mL	-	-	-	-	-	GASTROINTESTINAL PATHOLOGY
		PA0219	HD	-	-	-	-	7 mL	-	-	GASTROINTESTINAL PATHOLOGY
Gastrin	Polyclonal	PA0681	-	-	-	-	-	7 mL	-	-	GASTROINTESTINAL PATHOLOGY
Helicobacter pylori	Polyclonal	IHC5994-A	-	-	-	-	-	7 mL	-	-	GASTROINTESTINAL PATHOLOGY
	ULC3R	NCL-L-HPYLORI	HD	-	1 mL	-	-	-	-	-	GASTROINTESTINAL PATHOLOGY
Mismatch Repair Protein (MLH1)	ES05	NCL-L-MLH1	HD	-	1 mL	-	-	-	-	-	GASTROINTESTINAL PATHOLOGY
		PA0988	HD	-	-	-	-	7 mL	-	-	GASTROINTESTINAL PATHOLOGY
Mismatch Repair Protein (MSH2)	79H11	NCL-L-MSH2-612	HD	-	1 mL	-	-	-	-	-	GASTROINTESTINAL PATHOLOGY
		PA0989	HD	-	-	-	-	7 mL	-	-	
	25D12	NCL-L-MSH2	HD	-	1 mL	-	-	-	-	-	
Mismatch Repair Protein (MSH6)	EP49	PA0990	HD	-	-	-	-	7 mL	-	-	GASTROINTESTINAL PATHOLOGY
	PU29	NCL-L-MSH6	HD	-	1 mL	-	-	-	-	-	GASTROINTESTINAL PATHOLOGY
Mismatch Repair Protein (PMS2)	EP51	PA0991	HD	-	-	-	-	7 mL	-	-	GASTROINTESTINAL PATHOLOGY
	M0R4G	NCL-L-PMS2	HD	-	1 mL	-	-	-	-	-	GASTROINTESTINAL PATHOLOGY
Muc-1 Glycoprotein	Ma695	PA0051	-	-	-	-	-	7 mL	-	-	GASTROINTESTINAL PATHOLOGY
Muc-2 Glycoprotein	Ccp58	PA0155	-	-	-	-	-	7 mL	-	-	GASTROINTESTINAL PATHOLOGY
Muc-4 Glycoprotein	EPR9308	PA0444	-	-	-	-	-	7 mL	-	-	GASTROINTESTINAL PATHOLOGY
Muc-5AC Glycoprotein	CLH2	PA0052	-	-	-	-	-	7 mL	-	-	GASTROINTESTINAL PATHOLOGY
Muc-6 Glycoprotein	CLH5	PA0053	-	-	-	-	-	7 mL	-	-	GASTROINTESTINAL PATHOLOGY
Serotonin	Polyclonal	PA0736	-	-	-	-	-	7 mL	-	-	GASTROINTESTINAL PATHOLOGY
Villin	CWWB1	NCL-L-VILLIN	-	-	1 mL	-	-	-	-	-	GASTROINTESTINAL PATHOLOGY

Products in this flyer are subject to regulatory approval. Please consult your Leica Biosystems Sales Representative for availability in your region.

IVD/CE labelled Class I antibodies are recommended for the detection of specific antigens related to the antibody in normal and neoplastic tissues, as an adjunct to conventional histopathology using non-immunologic histochemical stains.

LEICA BIOSYSTEMS IS AN INTERNATIONAL COMPANY WITH A STRONG NETWORK OF WORLDWIDE CUSTOMER SERVICES
 For detailed contact information on your nearest sales office or distributor please visit our website: [LeicaBiosystems.com](https://www.LeicaBiosystems.com)

Leica Biosystems is a global leader in workflow solutions and automation. As the only company to own the workflow from biopsy to diagnosis, we are uniquely positioned to break down the barriers between each of these steps. Our mission of "Advancing Cancer Diagnostics, Improving Lives" is at the heart of our corporate culture. Our easy-to-use and consistently reliable offerings help improve workflow efficiency and diagnostic confidence. The company is represented in over 100 countries. It has manufacturing facilities in 9 countries, sales and service organizations in 19 countries, and an international network of dealers. The company is headquartered in Nussloch, Germany. Visit [LeicaBiosystems.com](https://www.LeicaBiosystems.com) for more information.

Copyright © 2021 Leica Biosystems, a division of Leica Microsystems Inc. All Rights Reserved. LEICA and the Leica logo are registered trademarks of Leica Microsystems IR GmbH. BOND and Novocastra are trademarks of the Leica Biosystems group of companies in the USA and optionally in other countries. Other logos, product and/or company names might be trademarks of their respective owners.