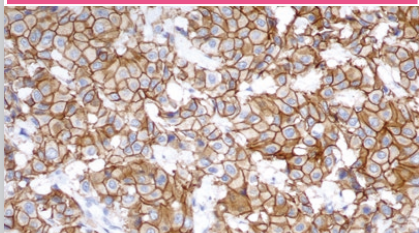


NOVOCASTRA

BREAST PATHOLOGY MARKERS

c-erbB-2 Oncoprotein (HER-2) Antibodies

BREAST PATHOLOGY

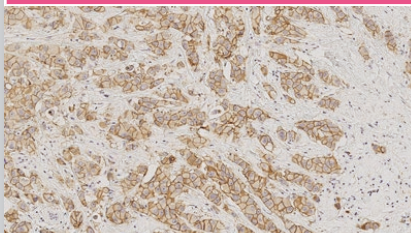


Human breast: invasive ductal carcinoma: immunohistochemical staining for c-erbB-2 Oncoprotein (HER-2) - Clone CB11

CB11	NCL-L-CB11	1 mL	-
	PA0983	7 mL	-
	PA0571	13.5 mL	-
10A7	NCL-L-CBE-356	1 mL	-

E-Cadherin

BREAST PATHOLOGY

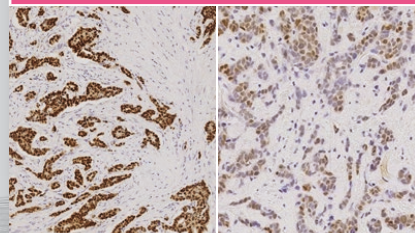


Invasive breast carcinoma: immunohistochemical staining for E-Cadherin - Clone 36B5

36B5	NCL-L-E-Cad	1 mL	HD
	PA0387	7 mL	HD

Estrogen Receptor

BREAST PATHOLOGY

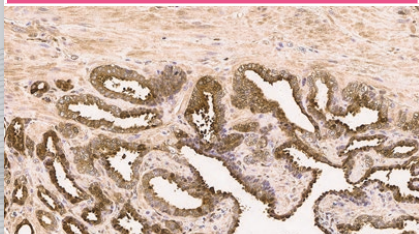


Left: Invasive ductal carcinoma (high expressor). Right: Invasive ductal carcinoma (moderate expressor): immunohistochemical staining for Estrogen Receptor - Clone 6F11

6F11	NCL-L-ER-6F11	1 mL	HD
	NCL-L-ER-6F11/2	2 mL	HD
	PA0151	7 mL	HD
	PA0009	30 mL	HD

Galectin-3

BREAST PATHOLOGY

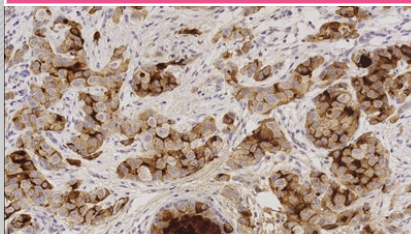


Prostate carcinoma: immunohistochemical staining of Galectin-3 - Clone 9C4

9C4	PA0238	7 mL	-
------------	--------	------	---

Gross Cystic Disease Fluid Protein-15

BREAST PATHOLOGY

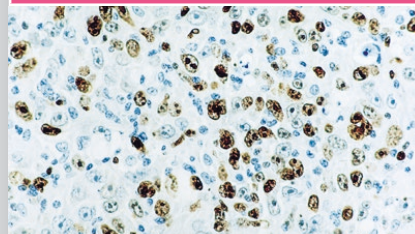


Invasive breast carcinoma: immunohistochemical staining for Gross Cystic Disease Fluid Protein-15 - Clone 23A3

23A3	NCL-L-GCDFP15	1 mL	HD
	PA0708	7 mL	HD

Ki67 Antigen

BREAST PATHOLOGY



Diffuse large B cell lymphoma: immunohistochemical staining for Ki67 - Clone MM1

MM1	NCL-L-Ki67-MM1	1 mL	HD
	PA0118	7 mL	HD
	PA0410	30 mL	HD
K2	ACK02	1 mL	-
	PA0230	7 mL	-

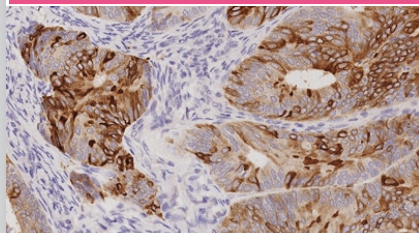
Products in this flyer are subject to regulatory approval. Please consult your Leica Biosystems Sales Representative for availability in your region.

IVD/CE labelled Class I antibodies are recommended for the detection of specific antigens related to the antibody in normal and neoplastic tissues, as an adjunct to conventional histopathology using non-immunologic histochemical stains.

The EP clones have been created by Epitomics Inc., using Epitomics' proprietary rabbit monoclonal antibody technology covered under Patent No.'s 5, 675, 063 and 7, 402, 409.

Mammaglobin

BREAST PATHOLOGY

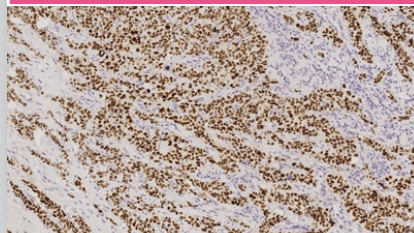


Human ductal carcinoma of breast: immunohistochemical staining for Mammaglobin protein - Clone EP249

EP249
PA0378
7 mL
-

p53 Protein

BREAST PATHOLOGY

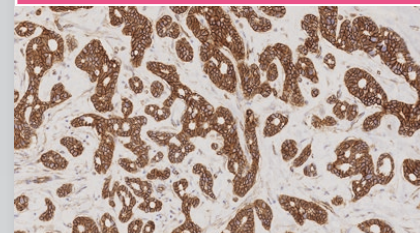


Human ductal carcinoma of the breast: immunohistochemical staining of p53 Protein - Clone DO-7

DO-7
NCL-L-p53-DO7
1 mL
HD
PA0057
7 mL
HD

p120 Catenin

BREAST PATHOLOGY

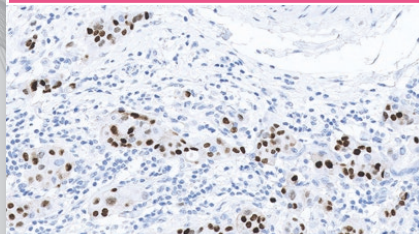


Human breast carcinoma: immunohistochemical staining for p120 Catenin antigen - Clone EP66

EP66
PA0379
7 mL
-

Progesterone Receptor

BREAST PATHOLOGY

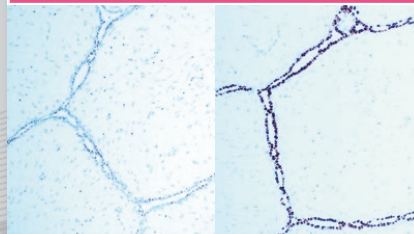


Breast carcinoma: immunohistochemical staining of Progesterone Receptor - Clone 16

16
NCL-L-PGR-312
1 mL
HD
NCL-L-PGR-312/2
2 mL
HD
PA0312
7 mL
HD
PA0436
30 mL
HD
1A6
NCL-L-PGR
1 mL
-

Progesterone Receptor (A/B Forms)

BREAST PATHOLOGY



Human fibroadenoma (serial sections): immunohistochemical staining for Progesterone Receptor (A and B forms) - Clones 16/SAN27

16/SAN27
NCL-L-PGR-AB
1 mL
-

Products in this flyer are subject to regulatory approval. Please consult your Leica Biosystems Sales Representative for availability in your region.

IVD/CE labelled Class I antibodies are recommended for the detection of specific antigens related to the antibody in normal and neoplastic tissues, as an adjunct to conventional histopathology using non-immunologic histochemical stains.

The EP clones have been created by Epitomics Inc., using Epitomics' proprietary rabbit monoclonal antibody technology covered under Patent No.'s 5, 675, 063 and 7, 402, 409.

LEICA BIOSYSTEMS IS AN INTERNATIONAL COMPANY WITH A STRONG NETWORK OF WORLDWIDE CUSTOMER SERVICES

For detailed contact information on your nearest sales office or distributor please visit our website: LeicaBiosystems.com

Leica Biosystems is a global leader in workflow solutions and automation. As the only company to own the workflow from biopsy to diagnosis, we are uniquely positioned to break down the barriers between each of these steps. Our mission of "Advancing Cancer Diagnostics, Improving Lives" is at the heart of our corporate culture. Our easy-to-use and consistently reliable offerings help improve workflow efficiency and diagnostic confidence. The company is represented in over 100 countries. It has manufacturing facilities in 9 countries, sales and service organizations in 19 countries, and an international network of dealers. The company is headquartered in Nussloch, Germany. Visit LeicaBiosystems.com for more information.

Copyright © 2021 Leica Biosystems, a division of Leica Microsystems Inc. All Rights Reserved. LEICA and the Leica logo are registered trademarks of Leica Microsystems IR GmbH. BOND and Novocastra are trademarks of the Leica Biosystems group of companies in the USA and optionally in other countries. Other logos, product and/or company names might be trademarks of their respective owners.